



BAKER LAND DESIGN
 LANDSCAPE ARCHITECTURE • LAND PLANNING
 WWW.BAKERLANDESIGN.COM

THE DRAWING BOARD

Volume 2, Issue 3

Fall 2008

WHERE GOING THE SECOND MILE IS SECOND NATURE

INSIDE THIS ISSUE:

- What I did on my Summer Vacation **2**
- BLD "SCORES" **2**
- White Oak Conference Center **3**
- Spotlight on our Services **4**

We don't keep our eggs in just one basket

One of our best assets is our ability to work for a variety of clients, on a variety of project types. We are always looking for new and exciting job opportunities. Not only does this make our job more interesting, but it makes us better designers. Each project provides great learning experiences and distinct problems, which we as Landscape Architects are charged with solving.

There are often misconceptions about what a Landscape Architect's job responsibilities can include.

The Department of Labor gives the following description on their website: "Landscape architects



design areas so that they are not only functional, but also beautiful, and compatible with the natural environment.

Landscape architects work for many types of organizations—from real estate development firms starting new projects to municipalities constructing airports or parks—and they often are involved with the development of a site from its

conception. Landscape architects create detailed plans indicating new topography, vegetation, walkways, and other landscaping details, such as fountains and decorative features.

In planning a site, landscape architects first study the project holistically. They also consider the purpose of the project and the funds available. They analyze the natural elements of the site.

After studying and analyzing the site, landscape architects prepare a preliminary design. They take into account any local, State, or Federal regulations, such as those protecting wetlands or historic resources. In preparing designs, computer-aided design (CAD) has become an essential tool for most landscape architects.

Throughout all phases of planning and design, landscape architects consult with other professionals, such as civil engineers, hydrologists, or architects, involved in the project. Once the design is complete, they prepare a proposal for the client. They produce detailed plans of the site, including written reports, sketches, models, photographs, land-use studies, and cost estimates, and submit them for approval by the client and by regulatory agencies. When the plans are approved, landscape architects prepare working drawings showing all existing and proposed features. They also outline in detail the methods of construction and draw up a list of necessary materials. Landscape architects then monitor the implementation of their design."

Even though we are thought of as one of Atlanta's premier residential-focused Landscape Architecture

firms, we have always and still continue to use our talents in the commercial field. For example, in the past few months we have prepared a variety of plans for commercial projects that have



included the following:

- INITIAL SITE ANALYSIS OF RAW LAND
- ZONING PACKAGES AND PRESENTATION BOARDS
- RENDERINGS
- SITE LAYOUT PLANS
- ENTRY DESIGN
- PROJECT BRANDING-LOGO DESIGN AND SIGNAGE LOCATION AND DESIGN THROUGHOUT THE PROJECT
- CONSTRUCTION PLANS AND PERMITTING
- TREE PLANS
- LANDSCAPE PLANS

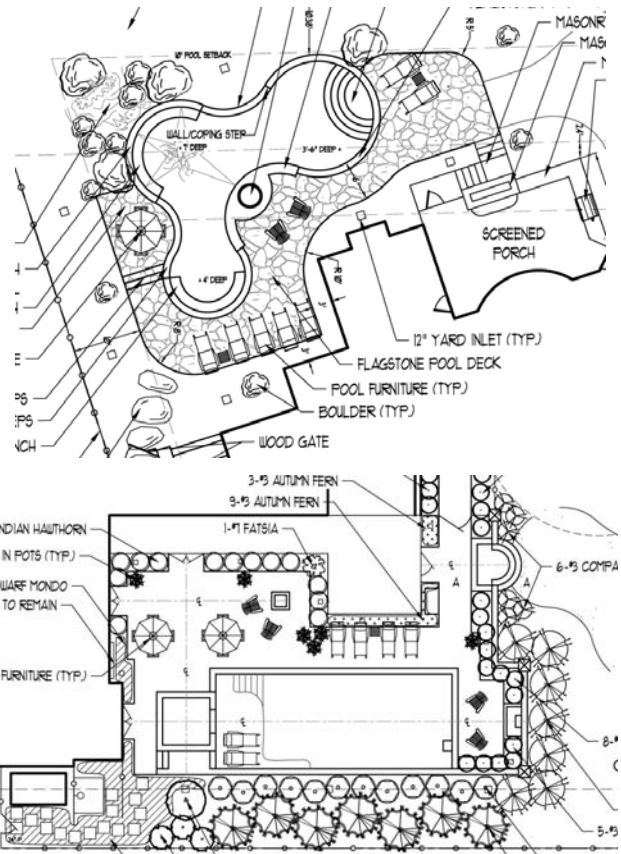


What I did on my summer vacation

The dog days of summer. A time to relax, catch a Braves game, or at the very least, hang out pool side. If you have a pool that is. And apparently, this summer, quite a few local residents realized their vacation dreams were not being fulfilled due to the lack of cool water just a few steps out the back door. So they called on the talented staff at BLD to make next summer's vacation stories more exciting. Our

summer was kept busy designing a wide range of pools; from more formal courtyard/garden settings to lavish free form pools with

spray jets, waterfalls, and fire pits. If you would like more info about our pool design services, click [here](#)



BLD "SCORES"



BLD recently worked with Chatham Holdings to provide a site plan and feasibility study for property in Costa Rica for SCORE International.

"SCORE International, a ministry to expose people to short term missions, is set to begin building a Missions Training Center in Coronado, Costa Rica, on eight acres of recently acquired property. The Center will house the Global Adventure Pursuit

program and La Gracia, a transitional home for orphans over 18, while providing lodging for mission teams working in Costa Rica. Project plans also include a gym and soccer field."

Excerpt taken from ES Magazine, September 2008 issue

WHITE OAK CONFERENCE CENTER

BLD is excited to be working with the White Oak Conference Center, an 840 acre facility affiliated with the SC Southern Baptist Convention, set in the wooded hills of the Midlands of South Carolina. We are assisting them in creating a CAMPUS MASTER PLAN, which includes:

ENHANCED ENTRANCE EXPERIENCE

INCLUDES NEW SIGN MONUMENT, AUTOMATIC GATES, ICONIC CROSSES, ASPHALT RESURFACING, AND LANDSCAPING IMPROVEMENTS.

REDESIGN OF HARDSCAPE AREAS OF THE MAIN CAMPUS

INCLUDES NEW COURTYARD, PLAZAS, PORTE COCHERE, AND RESURFACING SOME BUILDING ELEVATIONS

OPEN UP VIEW TO LAKE FROM ADMIN. BUILDING AND ADD GEYSER STYLE FOUNTAIN TO EX. LAKE

AMPHITHEATER AT LAKE

ADDITION OF HOTEL WITH PARKING

ADDITION OF SECOND GROUP HOME

EXISTING MOTELS

IMPROVEMENTS TO INCLUDE THINNING OUT OF TREES IN AIRFLOW AND NEW PARKING LOT STYLE LIGHTS

SPORTS COMPLEX

IMPROVEMENTS INCLUDE COVERING EXISTING BASKETBALL COURTS, ADDITION OF CLIMBING WALL, PUTT PUTT COURSE, MAZE, SKATE PARK, ROPES COURSE, TOT LOT, SHADE STRUCTURES, MUSHROOM WATER FEATURE, AND NEW BATH HOUSE WITH LOCKERS AND CONCESSIONS

R.V. PARK

13 INITIAL SPACES WITH ROOM FOR 11 MORE, BATH HOUSE, AND "PRIMITIVE" TENT CAMPING

RETIREMENT COTTAGES

4 DUPLEXES WITH ROOM FOR 4 MORE

TRAILS

IMPROVING EX. PEDESTRIAN TRAIL BY MULCHING, ADDING WORKOUT STATIONS AND DISTANCE MARKERS, ADDITION OF WOODEN BOARDWALK NEAR THE LAKE, A COMBINATION MTN. BIKE/HORSE TRAIL

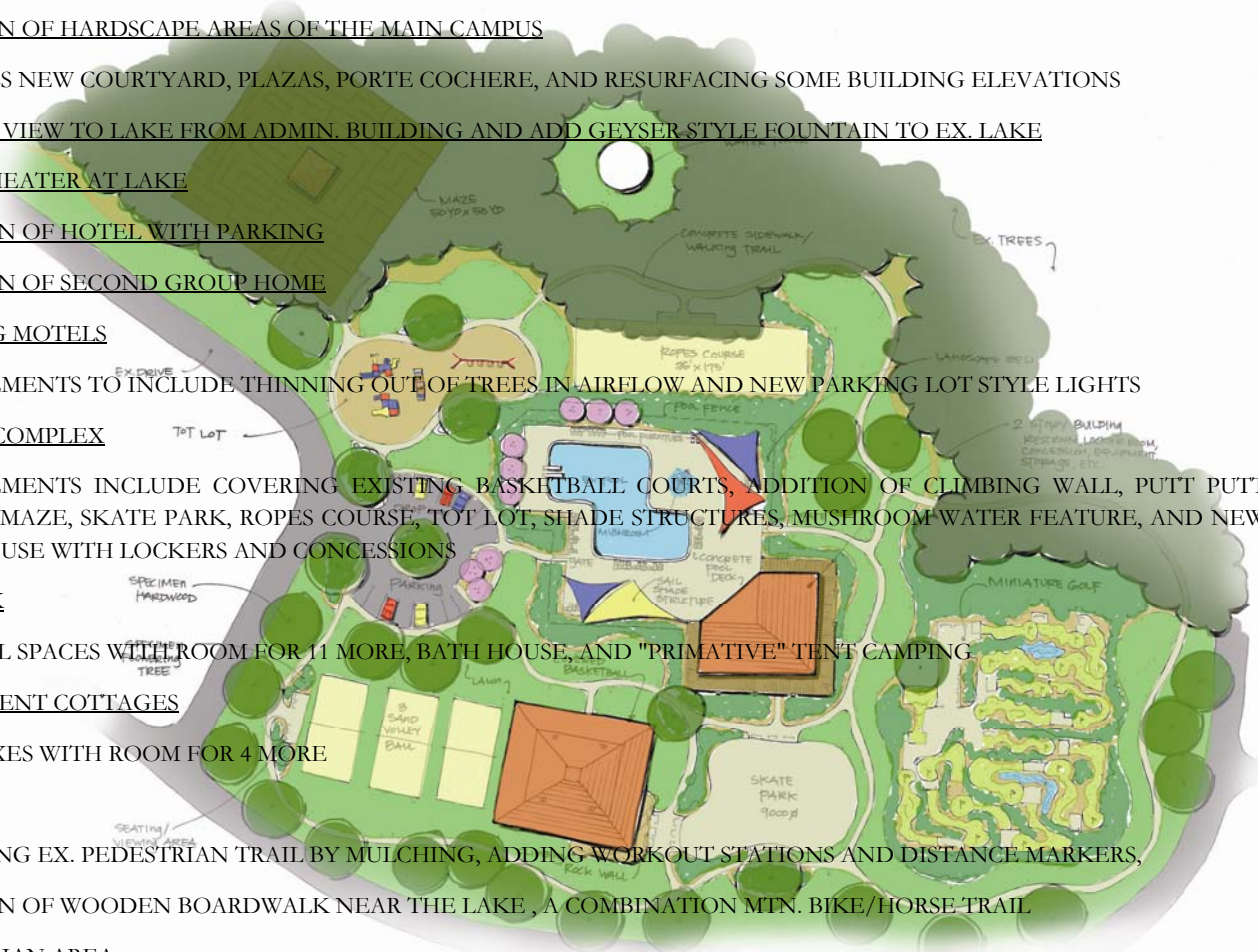
EQUESTRIAN AREA

WITH BARN AND PADDOCKS

18 HOLE GOLF COURSE

WITH CLUBHOUSE AND NEW LAKES

DEDICATED AREA FOR HUNTING, FISHING, AND TIMBER MANAGEMENT





**BAKER LAND
DESIGN**

450 Old Peachtree Road NW
Suite 105
Suwanee, GA 30024

Phone: 770-232-9835

Fax: 770-232-7339

Web: www.bakerlanddesign.com

Founded in 1996, Baker Land Design provides landscape architecture, land planning, and construction management services to property owners, developers and civil engineers.

BLD specializes in commercial design, neighborhood entrance design, recreation design, site/master planning, custom residential design, and planting design. For examples of our work, please see our website.



Design Build

By working as a design/build firm, we streamline the process from the concept plan through the entire construction phase. This includes the preparation of construction plans and specifications, obtaining the permit, gathering and awarding the bid, and construction management until project completion.

There are many benefits to this

Spotlight on our Services

streamlined process. We minimize the project risk for the owner by handling everything in-house. Our ability to make changes as necessary in the field, as we have a complete understanding of the design, ensures the finished project meets or exceeds the original design intent. Furthermore, BLD becomes the single contact for the owner and as such, all accountability lies with us.

If you would like to get BLD started on your next construction project, click [here](#)



sign monument concept



**constructed sign monument ,
under BLD supervision**